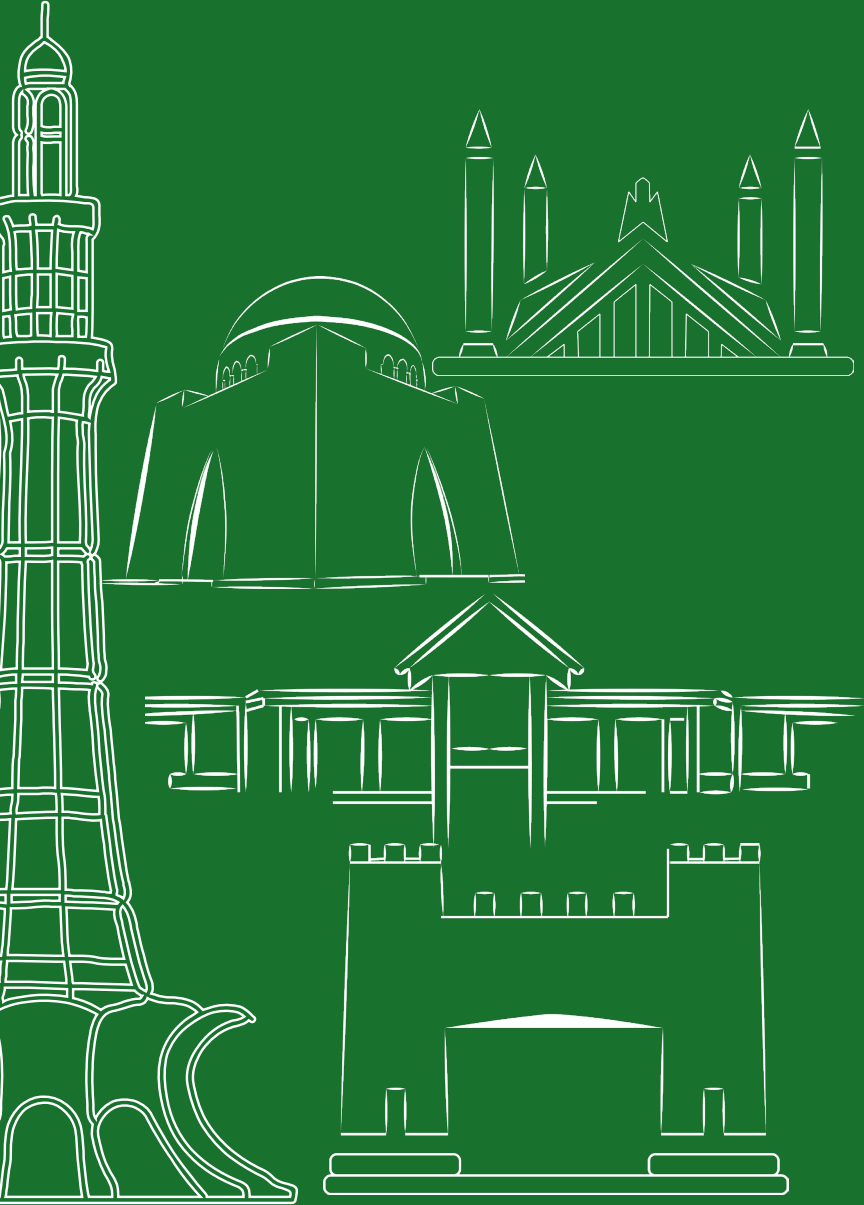


EXPLORE

PAKISTAN

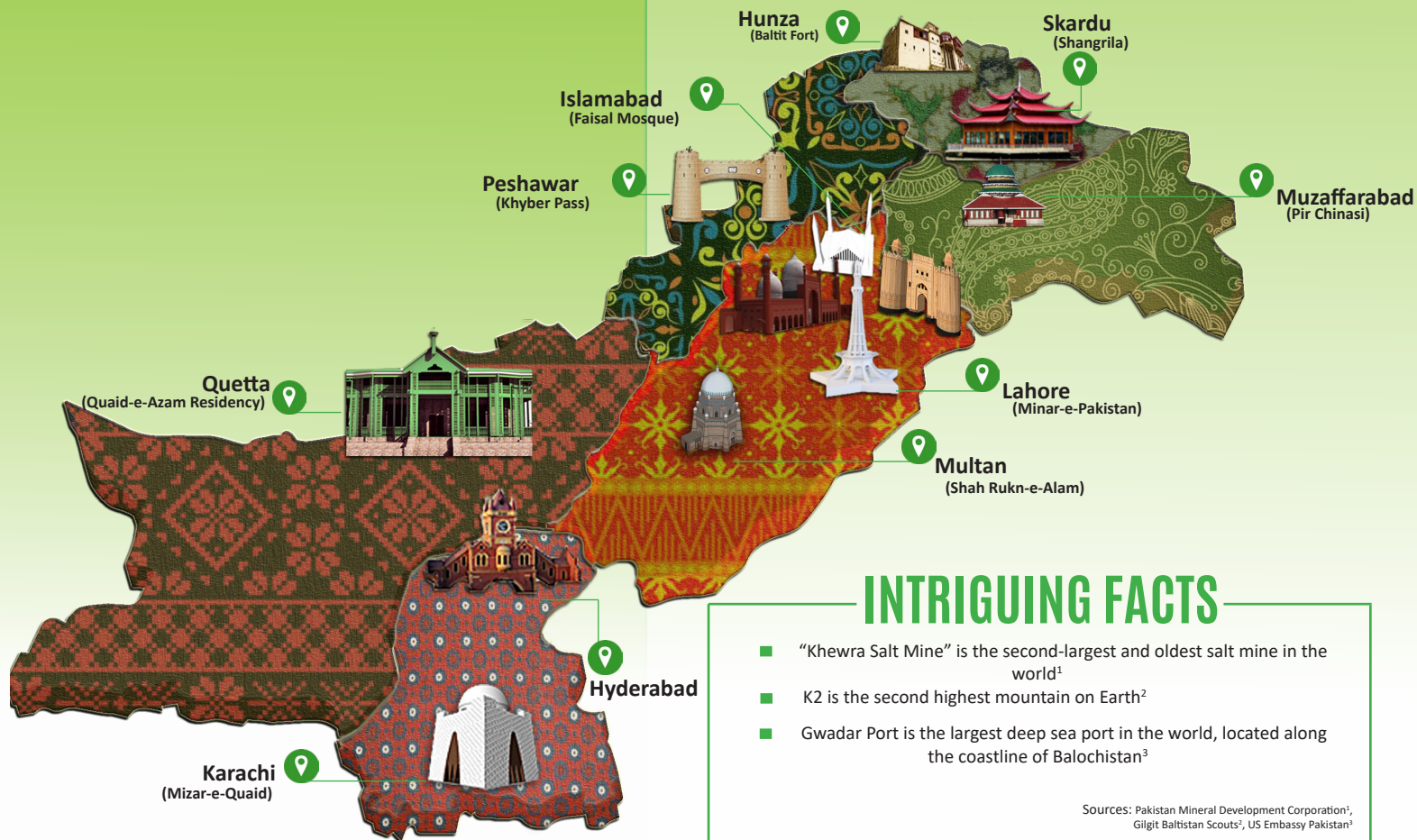


NATIONAL UNIVERSITY OF SCIENCES &
TECHNOLOGY, PAKISTAN
www.nust.edu.pk



Amazing

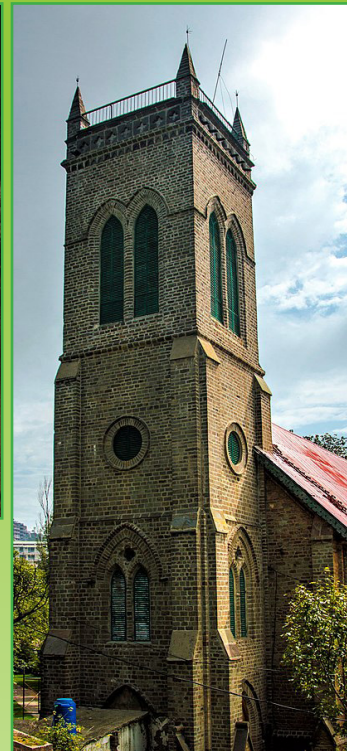
PAKISTAN



INTRIGUING FACTS

- “Khwera Salt Mine” is the second-largest and oldest salt mine in the world¹
- K2 is the second highest mountain on Earth²
- Gwadar Port is the largest deep sea port in the world, located along the coastline of Balochistan³

Sources: Pakistan Mineral Development Corporation¹, Gilgit Baltistan Scouts², US Embassy Pakistan³



FROM PICTURESQUE LANDSCAPES TO
RICH CULTURAL HERITAGE
WELCOME TO PAKISTAN



PAKISTAN AT A GLANCE

1 Capital City
Islamabad



2 Land Area
796,095 km²



3 Population
Approx 220.9 Million



4 Growth Rate
5.6% (FY 2021)



5 Literacy Rate
62% (2021-22)



6 Geography
Located in the Northwestern part of the South Asian subcontinent, bordered by Iran on the West, Afghanistan on the Northwest, China on the Northeast, India on the East, and the Arabian Sea on the South.

7 Major Cities
Karachi, Lahore, Peshawar, Quetta, Gilgit

8 Climate
Four seasons: Summer (May-July; hot with extreme temperature up to 50°C), Monsoon (July-August), Autumn (October-November) and Winter (December-March). Coastal area: generally warm all year-round. Northern area: snow in winter.

9 Language
Urdu – National
English – Official and is widely spoken as a business language
Local languages: Punjabi, Siraiki, Sindhi, Dogri, Pashto, Hindko, Balochi, Brahui, Balti, Shina

10 Time
GMT + 5

11 Country Code
+92

ISLAMABAD THE BEAUTIFUL



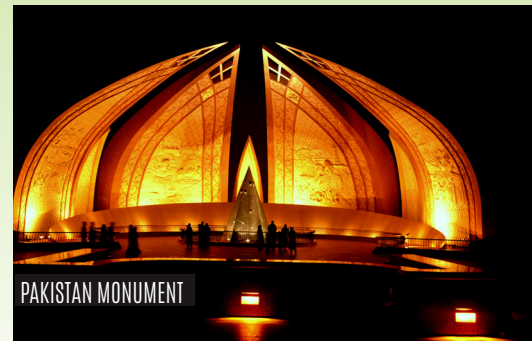
FAISAL MOSQUE



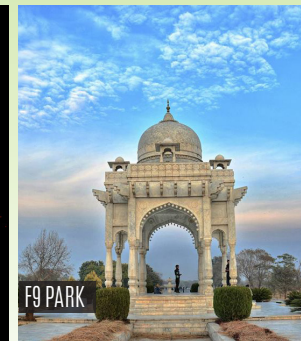
MARGALLA HILLS



SAIDPUR VILLAGE



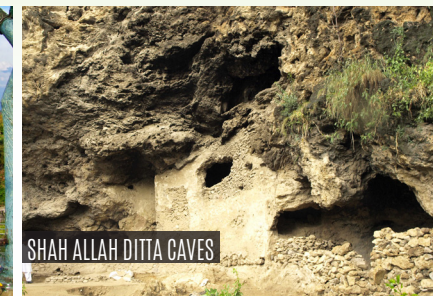
PAKISTAN MONUMENT



F9 PARK



RAWAL LAKE



SHAH ALLAH DITTA CAVES

